

PRODUCT
PORTFOLIO





CONTENTS

About us.....	01
Ball Valve Screwed End Heavy Duty	02
3 Pcs Ball Valve Screwed-end	03
2 Pcs & 3 Pcs Ball Valve Flanged-end	04
Ball Valve Economical Design	05
Strainers, Bibcock Garden Tap.....	06
Disc Check Valve, Multi Utility Check Valve	07
Globe Steam Stop Valve	08
Horizontal Lift Check Valve, Wafer Check Valve	09
Thermodynamic Steam Trap	10
Elbow 90°, Elbow 45°, Reducing Elbow	11
Street Elbow, Tee, Reducing Tee	12
Cross, Socket, Reducing Socket	13
Hex. Nipple, Reducing Hex Nipple.....	14
Hose Nipple, Tank Nipple, Union.....	15
Elbow Union F/F, Round Cap, Dummy/Square Plug	16
Reducing Bush, Hex Nut	17

INTRODUCTION

Laxmi Industries is an ISO 9001:2015 certified company, we are manufacturers and exporters of superior quality and high performance Valves, Stainless Steel Pipe Fittings and boiler mountings.

We are also Suppliers of Graded cast iron and ductile iron castings to various OEMs across the auto sector.

OUR HISTORY

Inception

Started in 1984, by Mr Romesh Gupta, to fulfil the void in the Indian diesel engine spares market, we began by producing the finest quality Engine Body Blocks, Cylinder heads, and Liners among other spares. The brand got approved by ISI Engine makers and became a household name in the market.

Expansion and New Brand

The second generation of the family joined the business in 1993, we expanded our operations and incorporated the brand LINTAS. Producing quality oil engine spares for OEMs and the market. In 2000, we started producing castings for tractors, commercial vehicles and valve manufacturers.

Manufacturing of Valve and fittings

In 2005, the company set up an investment casting plant to manufacture high-quality Valves and Pipe Fittings. Our products are manufactured considering international quality and testing standards and are globally accepted. Today we are a fully integrated unit capable of manufacturing valves, pipe fittings and boiler mountings to cater for the rising global demand.

MISSION STATEMENT

To manufacture products and give customers what they want, when they want it, at the highest quality and affordable cost.



LI-BV-01-SE

Stainless Steel Ball Valve Screwed End Heavy Duty Design (Lintas)

Features

- Superior Quality Stainless steel Investment casting, full bore blow-off proof stem with Stainless Steel Ball, Teflon Seat & Seal,
- Handle lever operated.
- Available in SS304 (CF8) & SS316(CF8M) Grades
- Design Standard: MSS SP - 110
- Screwed Female Ends to BSP/BSPT / NPT.
- Testing Standard -API - 598/BS-6755 Part - 1

Test Pressure: (Hydrostatic) :

Seat : 60kg/cm²g

Body : 80kg/cm²g

Suitability

Water, Air, Gas, Oil, Steam

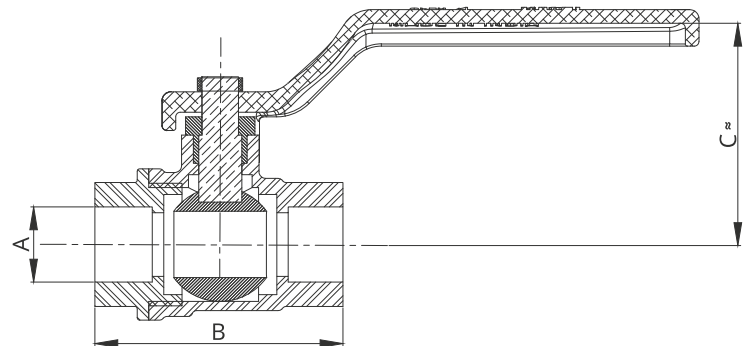


Materials of Construction

Part Name	Specifications / Material	Qty
Body	CF8 / CF8M	1
Connector	CF8 / CF8M	1
Ball	CF8 / CF8M	1
Stem	SS:304	1
Gland Nut	SS:304	1
Handle	SS:202	1
Seat / Seal	Teflon (PTFE)	5

Dimensions

Size (mm)	A	B	C [±]
08	1/4" BSP/NPT	53	50.00
10	3/8" BSP/NPT	53	50.00
15	1/2" BSP/NPT	61	56.50
20	3/4" BSP/NPT	74	64.00
25	1" BSP/NPT	85	71.50
32	1.1/4" BSP/NPT	95	73.50
40	1.1/2" BSP/NPT	109	88.00
50	2" BSP/NPT	125	94.50
65	2-1/2" BSP/NPT	140	122
80	3" BSP/NPT	171	130
100	4" BSP/NPT	196	158



LI-BV-01-3SE

Lintas Stainless Steel 3 Pcs Ball Valve Screwed-End

Features

- Superior Quality Stainless Steel Investment Casting.
- Confirms to Class-150
- Design Standard BS EN ISO 17292 (BS 5351).
- Screwed Female Ends to BSP/BSPT / NPT.
- Three Piece Design.
- Superb in Quality and Performance.
- Available in SS304(CF8) & SS316(CF8M) Grades.

Test Pressure (Hydrostatic) :

Shell : 31 kg/cm²g (440 psig)

Maximum Working Pressure: 21 kg/cm²g (300 PSig)

Seat (Pneumatic) : 7 kg/cm²g (100 psig)

Maximum Working Temperature: 200°C



Suitability

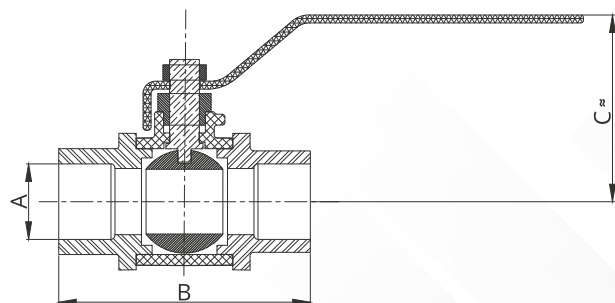
Water, Air, Gas, Oil, Steam

Materials of Construction

Part Name	Specifications / Material	Qty
Body	CF8/CF8M	1
Connector	CF8/CF8M	1
Ball	CF8/CF8M	1
Seat Ring	PTFE	2
Stem	SS:304	1
Ring washer	PTFE	2
Gland Packing	PTFE	1
Thrust Bearing	PTFE	1
Stud / Nut	SS:304	4 Set
Spring Washer	SS:304	8
Gland Nut	SS:304	1
Stem Nut	SS:304	1
Lever	SS:202	1
Stem Washer	SS:304	1

Dimensions

Size (mm)	A	B	C _±
15	1/2" BSP/NPT	69.00	56.00
20	3/4" BSP/NPT	73.00	64.00
25	1" BSP/NPT	89.00	75.00
32	1.1/4" BSP/NPT	105.00	82.00
40	1.1/2" BSP/NPT	115.00	88.00
50	2" BSP/NPT	127.00	93.00



LI-BV-01-2FE & LI-BV-01-3FE

Stainless Steel 2 Pcs & 3Pcs Ball Valve Flanged-End (Lintas)

IBR
Approved

Features

- Superior Quality Stainless Steel Investment Casting.
- Design Standard BS EN ISO 17292 (BS 5351).
- Flanged Ends to ASME B16.5 Class-150.
- Available in 3Pcs / 2Pcs Design.
- Superb in Quality and Performance.
- Available in SS304 (CF8) & SS316(CF8M)

Test Pressure (Hydrostatic) :

Shell : 31 kg/cm²g (440 psig)

Maximum Working Pressure: 21 kg/cm²g (300 PSig)

Seat (Pneumatic) : 7 kg/cm²g (100 psig)

Maximum Working Temperature: 200°C

Suitability

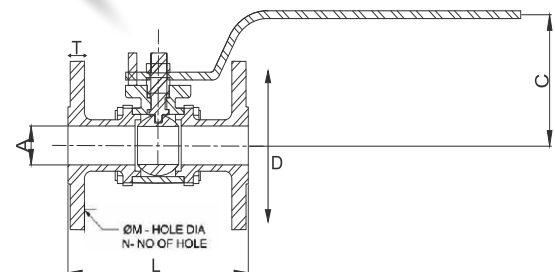
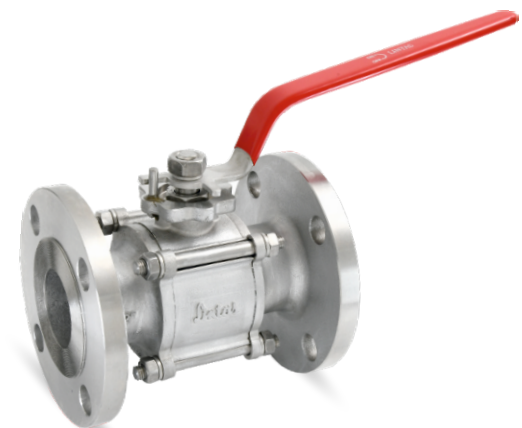
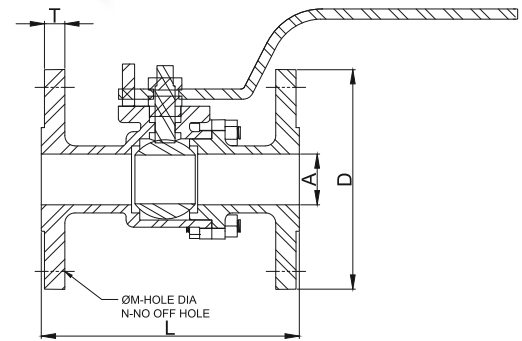
Water, Air, Gas, Oil, Steam

Materials of Construction

Part Name	Specifications / Material	Qty
Body	CF8/CF8M	1
2 Pcs Connector	CF8 / CF8M	1
3 Pcs Connector	CF8 / CF8M	2
Ball	CF8 / CF8M	1
Seat Ring	PTFE	2
Stem	CF8 / CF8M	1
Ring washer	PTFE	1&2
Gland Packing	PTFE	1
Thrust Bearing	PTFE	1
Stud / Nut	CF8 / CF8M	4 Set
Spring Washer	Cf8 / CF8M	8
Lock Pin	CF8 / CF8M	1
Gland Nut	CF8 / CF8M	1
Stem Nut	CF8 / CF8M	1
Lever	SS:202	1
Stem Washer	CF8 / CF8M	1

Dimensions

Size	A (± 1 mm)	D	N	ØM	PCD	L (± 2 mm)	T (± 1 mm)
1/2"	14	89	4	16	60.5	108	9
3/4"	19	100	4	16	70	117	9.5
1"	25	108	4	16	79.4	127	10
1.1/4"	32	117	4	16	88.9	140	11
1.1/2"	40	127	4	16	98.4	165	13
2"	50	152	4	19	120.7	178	15
2.1/2"	63.5	178	4	19	139.7	190	16
3"	76	190	4	19	152	203	17
4"	100	229	8	19	191	229	18



AQ-BV-01-SE

AICQ Stainless-Steel Ball Valve Economical Design

Features

- Superior Quality Stainless steel Investment casting, full bore blow-off proof stem with Stainless Steel Ball, Teflon Seat & Seal, Handle lever operated.
- Available in SS304(CF8) & SS316(CF8M) Grades
- Pressure/Class Rating: PN40
- Screwed Female Ends to BSP/BSPT / NPT.
- Testing Standard -API – 598/BS-6755 Part – 1

Test Pressure (Hydrostatic) :

Shell : 31 kg/cm²g (440 psig)

Maximum Working Pressure: 21 kg/cm²g (300 PSig)

Seat (Pneumatic) : 7 kg/cm²g (100 psig)

Maximum Working Temperature: 200°C



Suitability

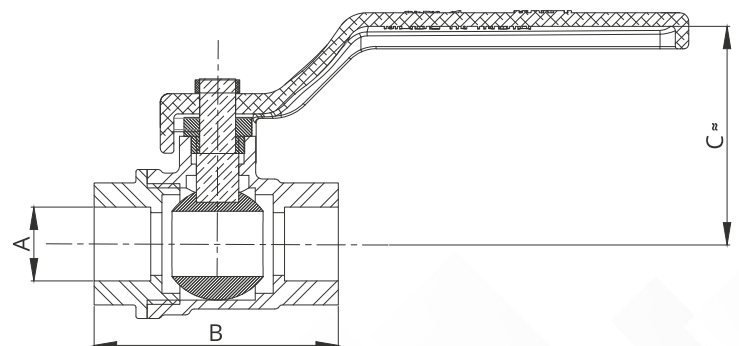
Water, Air, Gas, Oil, Steam

Materials of Construction

Part Name	Specifications / Material	Qty
Body	CF8/CF8M	1
Connector	CF8 / CF8M	1
Ball	CF8 / CF8M	1
Stem	CF8 / CF8M	1
Gland Nut	CF8 / CF8M	1
Handle	SS:202	1
Seat / Seal	Teflon (PTFE)	5

Dimensions

Size (mm)	A	B	C ≈
15	1/4" BSP/NPT	53.00	47.00
20	3/4" BSP/NPT	60.00	52.00
25	1" BSP/NPT	71.00	69.00
32	1.1/4" BSP/NPT	81.00	74.00
40	1.1/2" BSP/NPT	88.00	81.00
50	2" BSP/NPT	109.00	90.00
65	2-1/2" BSP/NPT	126	124
80	3" BSP/NPT	150.00	141.00
100	4" BSP/NPT	167	153



LI-YSTR-01

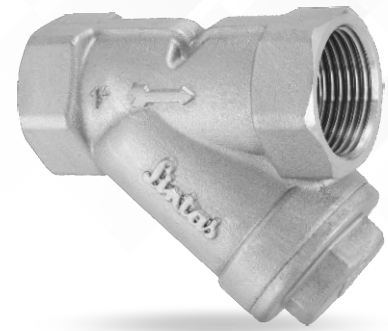
Lintas Stainless Steel Y-Type Strainer

Features

- Superior Quality Stainless-Steel Investment Casting
- Full Metal In-House Construction for a long and trouble-free life
- Stainless Steel (S.S 304) perforated sheet screen is guided in body and bonnet.
- Double-Mesh Filter is available as Extras.
- Fine finish and smooth contours to minimize pressure drop inside the strainer.
- Screwed Female Ends to BSP/BSPT / NPT.
- A large screening area makes the strainer highly efficient in performance.

Suitability

Water, Air, Gas, Oil, Steam



Testing pressure: 21.1 Kg/cm

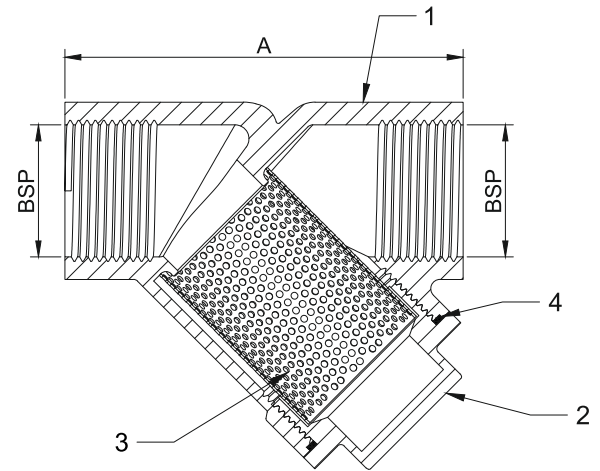
Maximum Permissible Temperature: 225°C

Materials of Construction

Sr. No.	Part Name	Specifications / Material	Qty
01	Body	CF8 / CF8M	1
02	Plug	CF8 / CF8M	1
03	Screen	CF8 / CF8M	1
04	Ring	PTFE	1

Dimensions

Size (DN) mm	(A) End to End ± 1.00 mm	Size (NPS)
15	64	1/2"
20	80	3/4"
25	85	1"
32	104	1.1/4"
40	117	1.1/2"
50	138	2"



AQ-GT-01

Stainless-Steel Bibcock Garden Tap

Features

- Investment-Casted Stainless Steel, available in CF8 / CF8M Grades.
- Hand Lever operated, quarter turn ON / OFF
- Easy wall mount Installation.
- It's Rust Free, Corrosion Resistant, Anti Moisture, and has a long maintenance-free operating life.
- Pressure rating PN 40

Suitability

Water, Air

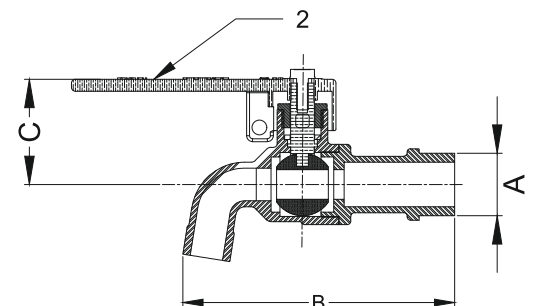


Materials of Construction

Sr. No.	Part Name	Specifications / Material	Qty
01	Body	CF8 / CF8M	1
02	Connector	CF8 / CF8M	1
03	Ball	CF8 / CF8M	1
04	Stem	CF8 / CF8M	1
05	Gland Nut	CF8 / CF8M	1
06	Handle	SS: 202	1
07	Seat / Seal	PTFE	5

Dimensions

Size (DN) mm	A	B (mm)	C (mm) \approx
15	1/2" BSP/NPT	100.00	36.00

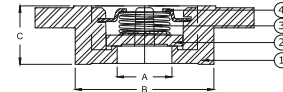
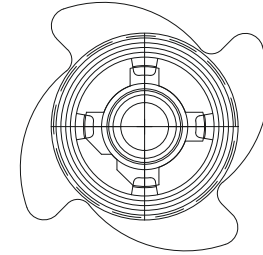


LI-CV-01

Stainless Steel Disc Check Valve

Features

- Wafer Type design to take lesser space than Conventional Check Valve.
- Superior Quality Investment Casting.
- Full bore for good flow characteristics.
- Tight shut-off lapped disc.
- Horizontal & Vertical Installation
- Permits flow in one direction and shuts automatically if the flow reverses.
- Available in S.S 304(CF8) & S.S 316(CF8M) Grades.
- Max. Operating Pressure: PN 40



Suitability

Water, Air, Oil, Steam

Dimensions

Size mm	Bore (A) mm	Diameter (B) ±1.00 mm	Total Height (C) ±1.00 mm
15	15	38	20
20	20	46	21
25	25	54	22
32	32	64	27
40	40	72	33
50	50	89	41
65	65	109	47
80	80	128	51
100	100	148	60

Materials of Construction

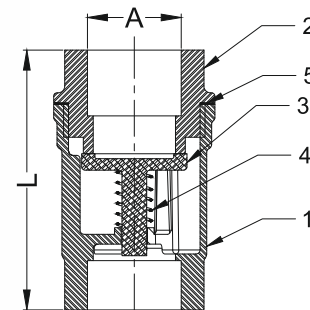
Sr. No.	Part Name	Specifications / Material	Qty
01	Body	CF8 / CF8M	1
02	Disc	CF8 / CF8M	1
03	Spring	CF8 / CF8M	1
04	Lock	CF8 / CF8M	1

AQ-NRV-01

Stainless-Steel Multi Utility Check Valve (Screwed Ends)

Features

- Screwed Female Ends, available in BSP/BSPT/NPT Threading standards
- Investment Casted Stainless-Steel, Available in CF8 & CF8M Grades
- Screwed in Bonnet.
- Spring Loaded closing Suitable for both Horizontal and Vertical Lines.
- Permits flow in one direction and shuts automatically if the flow reverses.
- The disc is guided in Body as well as in Bonnet.
- Tight shut-off lapped disc.



Materials of Construction

Sr. No.	Part Name	Specifications / Material	Qty
01	Body	CF8 / CF8M	1
02	Bonnet	CF8 / CF8M	1
03	Disc	CF8 / CF8M	1
04	Spring	CF8 / CF8M	1
05	Ring	PTFE	1

Dimensions

Size (DN) mm	A	L mm
15	1/2" BSP/NPT	60.00
20	3/4" BSP/NPT	67.00
25	1" BSP/NPT	79.00
32	1.1/4" BSP/NPT	85.00
40	1.1/2" BSP/NPT	95.00
50	2" BSP/NPT	110.00

Test Pressure:

Body: 300 Psig (Hydro.)
 Seat: 200 Psig (Hydro.)
 Maximum Operating Pressure: PN 40

Suitability

Water, Oil

LI-GV-02-FE

Cast Iron Globe Steam Stop Valve Pn 16 (lintas)

IBR
Approved

Features

- Flanged Ends to DIN 2533 PN 16RF.
- Straight Pattern, Outside Screw, Yoke Type, Rising Stem.
- Stainless Steel (S.S 410) working parts.
- Fluidic body design and high-lift seat to reduce pressure drop and provide optimal flow.
- Ductile-Iron cast Hand-Wheel, Ergonomically designed to provide smooth operation and effortless torque.

Test Pressure:

(Hydrostatic) :

Shell : 26 kg/cm²g (370 ps)

Working Pressure (Steam

13 kg/cm²g (185 psig)

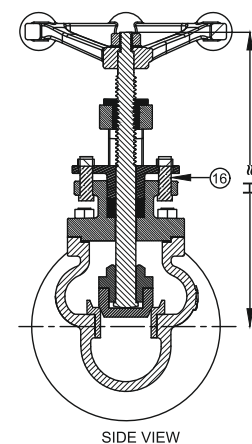
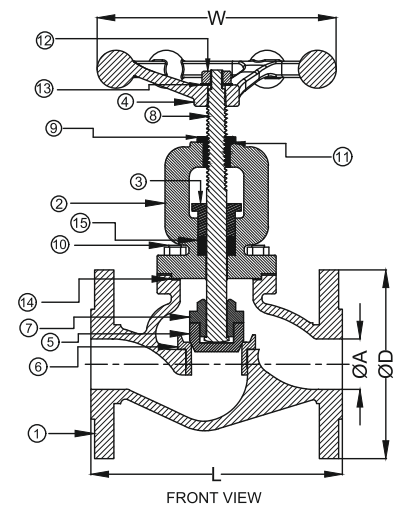
Maximum Working

Temperature: 220°C



Name of Parts	Material of Construction	Specification	Qty.
Body	Cast Iron	IBR 86-93 Gr. A	1
Bonnet	Cast Iron	IBR 86-93 Gr. A	1
Gland	Cast Iron	IBR 86-93 Gr. A	1
Hand Wheel	Ductiles Iron	EN-GJS-450-10	1
Seat	Stainless Steel	ASTM A 276 TYPE 410	1
Seat Ring	Stainless Steel	ASTM A 276 TYPE 410	1
Check Nut	Stainless Steel	ASTM A 276 TYPE 410	1
Stem	Stainless Steel	ASTM A 276 TYPE 410	1
Yoke Bush	Stainless Steel	ASTM A 276 TYPE 410	1
Stud/Nut	Carbon Steel	IS 1367	As Reqd.
Locking Screw	Carbon Steel	IS 1367	1
Wheel Nut	Carbon Steel	IS 1367	1
Washer	Carbon Steel	IS 1367	1
Gasket	C.A.F/Non-Asbestos	IS 2712 Gr. W/3	1
Gland Packing	Braided Graphite Asbestos	IS 4687	---
T-Bolt/Nut	Carbon Steel	IS 1367	1

Nominal Size	ØA	ØD±1	L±2	H≈	ØW
15mm	15.0	95.0	130.0	178.0	100.0
20mm	20.0	105.0	150.0	182.0	100.0
25mm	25.0	115.0	160.0	182.0	125.0
32mm	32.0	140.0	180.0	200.0	125.0
40mm	40.0	150.0	200.0	230.0	160.0
50mm	50.0	165.0	230.0	254.0	200.0
65mm	65.0	185.0	290.0	280.0	200.0
80mm	80.0	200.0	310.0	305.0	250.0
100mm	100.0	230.0	350.0	350.0	250.0
125mm	125.0	250.0	400.0	425.0	250.0
150mm	150.0	285.0	480.0	480.0	315.0



LI-HRCV-02

Cast Iron Horizontal Lift Check Valve Straight Pattern

Features

- Flanged End to DIN 2533 PN 16RF
- Stainless Steel (S.S 410) working parts.
- Straight Pattern, Bolted Cover
- Minimum pressure drop inside the body due to streamlined body design.

Dimensions

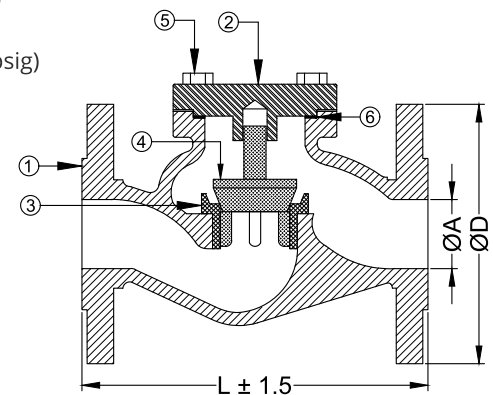
Size	Ø A	ØD±1	L±2
15	15.0	95.0	130.0
20	20.0	105.0	150.0
25	25.0	115.0	160.0
32	32.0	140.0	180.0
40	40.0	150.0	200.0
50	50.0	165.0	230.0
65	65.0	185.0	290.0
80	80.0	200.0	310.0
100	100.0	230.0	350.0
125	125.0	250.0	400.0
150	150.0	285.0	480.0

Suitability

Water, Steam

Test Pressure:

Shell: 26 kg.cm²g (370 psig)
 Working Pressure
 (Steam) : 13kg/cm²g (185 psig)
 Maximum Working
 Temperature: 220° C



Part Name	Specifications / Material	Standard	QNTY.
Body	Cast Iron	IBR 86-93 Gr. A	1
Bonnet	Cast Iron	IBR 86-93 Gr. A	1
Seat	Stainless Steel	ASTM A 276 TYPE 410	1
Seat Ring	Stainless Steel	ASTM A 276 TYPE 410	1
Bolt/Nut	Carbon Steel	IS 1367	As Reqd.
Gasket	C.A.F/Non-Asbestos	IS 2712 Gr.	1

LI-WCV-02 Wafer Check Valve

Features

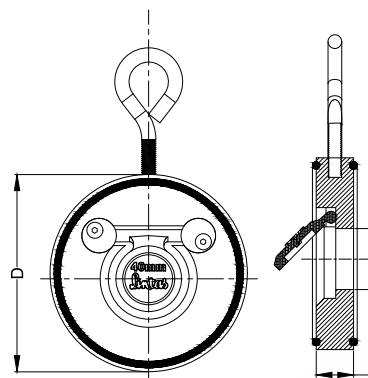
- Body Material cum standard : Ductile Iron
- Product Description Single Plate Wafer Check
- Pressure / Class / Rating : PN-16
- Type of Disc: Mild Steel / Stainless Steel
- Type of Seal : EPDM
- End Detail : Wafer Type

Testing & Certification

Body Test Pressure: 24kg/cm²g (Hyd).
 Seat Test Pressure : 16kg/cm²g (Hyd).

Dimensions

Size (mm)	Ø D (mm)	B (mm)	F±2 (mm)
40mm	86.0	22.0	19.0
50mm	97.0	30.0	19.0
65mm	110.0	40.0	19.0
80mm	129.0	52.0	19.0
100mm	161.0	71.0	19.0
125mm	193.0	93.0	19.0
150mm	215.0	114.0	19.0



Parts Name	Material	Parts Name	Material
Body	Ductile Iron	Seat Ring	Rubber
Disc	SS / MS	Lifting Eye Bolt	Carbon Steel
Retaining Washer	MS	Flange 'O' Ring	Rubber
Retaining Screw	Stainless Steel		

LI-ST-01

Lintas Stainless Steel Thermodynamic Steam Trap TD-3

IBR
Approved

Features

- Superior Quality Stainless-Steel Investment Casting
- Full Metal In-House Construction for a long and trouble-free life
- Stainless Steel (S.S 304) perforated sheet screen is guided in body and bonnet.
- Double-Mesh Filter is available as Extras.
- Fine finish and smooth contours to minimize pressure drop inside the strainer.
- A large screening area makes the strainer highly efficient in performance.



Test Pressure:

Maximum Operating Pressure : 31 bar

Maximum operating temperature: 425° C.

Hydraulic test Pressure : 51 bar

Suitability

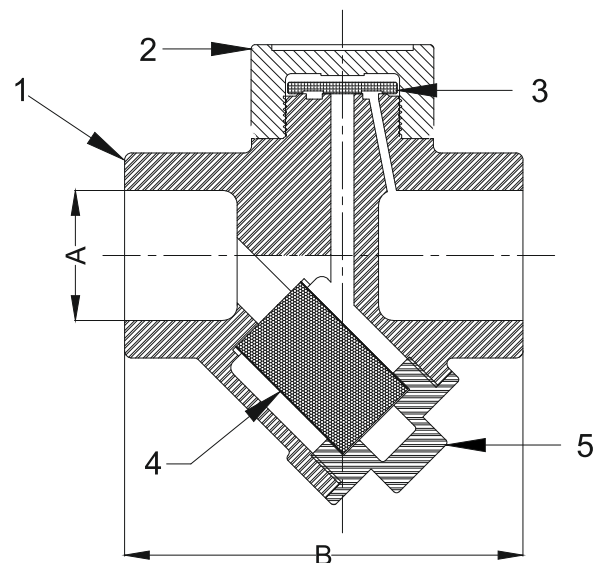
Steam

Materials of Construction

Sr. No.	Part Name	Specifications / Material	Qty
01	Body	SS:420	1
02	Nut	SS:420	1
03	Disc	SS:420	1
04	Screen	SS:304	1
05	Plug	SS:420	1

Dimensions

Size mm	End to End ± 1.00 mm	Size A (Inches)
15	80.00	1/2"
20	80.00	3/4"
25	89.00	1"



LI-EW90-01

Lintas Elbow 90°

Features

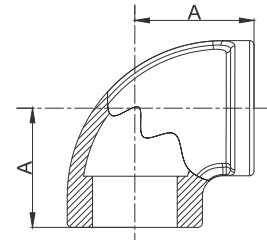
- Available in S.S 304(CF8) & S.S 316(CF8M) Grades.
- Available in BSP / BSPT / NPT Threading as per requirement.
- Pressure Rating PN25, Test Pressure(Hyd.): -30Kg./cm2 (427 psig)
- Working Pressure 25 Kg./cm2 (356 psig)

Dimensions

Size	A (mm)	Size	A (mm)
1/4"	20.90	1.1/2"	51.20
3/8"	23.00	2"	58.35
1/2"	27.80	2.1/2"	68
3/4"	32.80	3"	77.7
1"	38.90	4"	96.8
1.1/4"	44.80		

Suitability

Water, Air, Gas, Oil, Steam



LI-EW45-01

Lintas Elbow 45°

Features

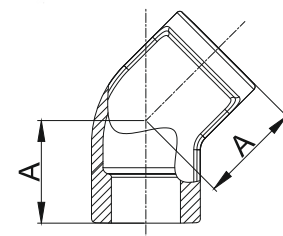
- Available in S.S 304(CF8) & S.S 316(CF8M) Grades.
- Available in BSP / BSPT / NPT Threading as per requirement.
- Pressure Rating PN25, Test Pressure(Hyd.): -30Kg./cm2 (427 psig)
- Working Pressure 25 Kg./cm2 (356 psig)

Dimensions

Size (mm)	A (mm)	Size (mm)	A (mm)
08	17	25	28
10	19	32	33
15	22	40	35
20	25	50	43

Suitability

Water, Air, Gas, Oil, Steam



LI-REW-01

Lintas Reducing Elbow

Features

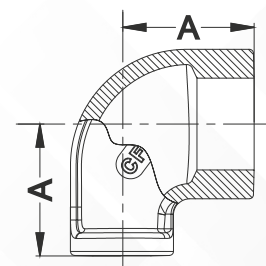
- Available in S.S 304(CF8) & S.S 316(CF8M) Grades.
- Available in BSP / BSPT / NPT Threading as per requirement.
- Pressure Rating PN25, Test Pressure(Hyd.): -30Kg./cm2 (427 psig)
- Working Pressure 25 Kg./cm2 (356 psig)

Dimensions

Size (mm)	A (mm)	Size (mm)	A (mm)	Size (mm)	A (mm)
10x8	00.0	25x20	40.0	50x15	59.0
15x8	28.0	32x15	45.0	50x25	59.0
15x10	28.0	32x20	45.0	50x32	59.0
20x8	32.0				
20x10	32.0				
20x15	32.0				
25x10	40.0				
25x15	40.0				

Suitability

Water, Air, Gas, Oil, Steam



LI-MFE-01

Lintas Street Elbow

Features

- Available in BSP / BSPT / NPT Threading as per requirement.
- Pressure Rating PN25, Test Pressure (Hyd.): -30Kg./cm² (427 psig)
- Working Pressure 25 Kg./cm² (356 psig)

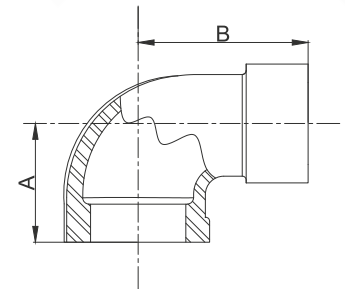
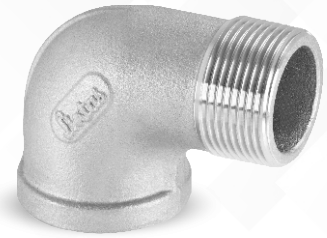
Dimensions

Size	A (mm)	B (mm)
-	-	-
1/4"	21.00	29.00
3/8"	23.50	37.00
1/2"	28.71	41.10
3/4"	33.43	48.76

Size	A (mm)	B (mm)
1"	36.83	54.35
1.1/4"	44.5	63.5
1.1/2"	49	70
2"	57.2	82.6

Suitability

Water, Air, Gas, Oil, Steam



LI-T-01

Lintas Tee

Features

- Available in S.S 304(CF8) & S.S 316(CF8M) Grades.
- Available in BSP / BSPT / NPT Threading as per requirement.
- Pressure Rating PN25, Test Pressure (Hyd.): -30Kg./cm² (427 psig)
- Working Pressure 25 Kg./cm² (356 psig)

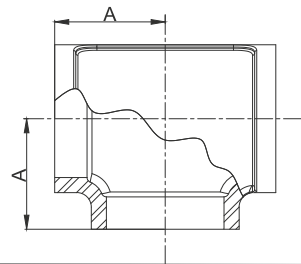
Dimensions

Size	A (mm)
1/4"	20.90
3/8"	23.74
1/2"	28.54
3/4"	32.80
1"	37.00
1.1/4"	44.25

Size	A (mm)
1.1/2"	51.25
2"	55.75
2.1/2"	68
3"	77.7
4"	96.5

Suitability

Water, Air, Gas, Oil, Steam



LI-RT-01

Lintas Reducing Tee

Features

- Available in S.S 304(CF8) & S.S 316(CF8M) Grades.
- Available in BSP / BSPT / NPT Threading as per requirement.
- Pressure Rating PN25, Test Pressure (Hyd.): -30Kg./cm² (427 psig)
- Working Pressure 25 Kg./cm² (356 psig)

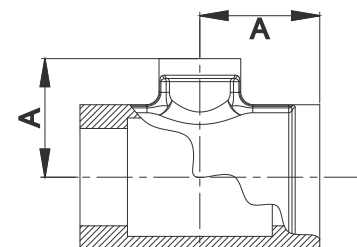
Dimensions

Size	A (mm)
15x8	28.0
15x10	28.0
20x10	32.0
20x15	32.0

Size	A (mm)
25x10	36.0
25x15	36.0
25x20	36.0

Suitability

Water, Air, Gas, Oil, Steam



LI-CRS-01

Lintas Cross

Features

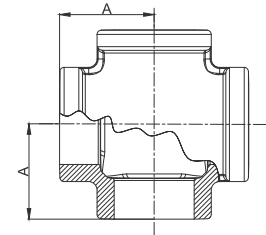
- Available in BSP / BSPT / NPT Threading as per requirement.
- Pressure Rating PN25, Test Pressure (Hyd.): -30 Kg./cm² (427 psig)
- Working Pressure 25 Kg./cm² (356 psig)

Dimensions

Size	A (mm)	Size	A (mm)
1/8"	-	1.1/4"	44.0
1/4"	-	1.1/2"	50.5
3/8"	-	2"	55.0
1/2"	28.70	2.1/2"	-
3/4"	32.30	3"	-
1"	37.50	4"	-

Suitability

Water, Air, Gas, Oil, Steam



LI-SKT-01

Lintas Socket

Features

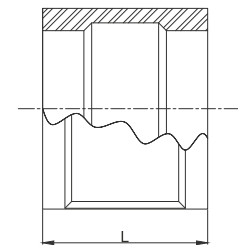
- Available in S.S 304(CF8) & S.S 316(CF8M) Grades.
- Available in BSP / BSPT / NPT Threading as per requirement.
- Pressure Rating PN25, Test Pressure (Hyd.): -30 Kg./cm² (427 psig)
- Working Pressure 25 Kg./cm² (356 psig)

Dimensions

Size	L (mm)	Size	L (mm)
1/4"	26	1.1/2"	54
3/8"	28	2"	61
1/2"	36	2.1/2"	72
3/4"	38	3"	81
1"	45	4"	93
1.1/4"	51		

Suitability

Water, Air, Gas, Oil, Steam



LI-RSKT-01

Lintas Reducing Socket

Features

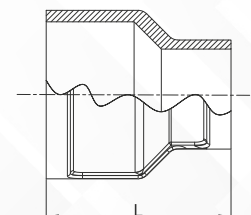
- Available in BSP / BSPT / NPT Threading as per requirement.
- Pressure Rating PN25, Test Pressure (Hyd.): -30 Kg./cm² (427 psig)
- Working Pressure 25 Kg./cm² (356 psig)

Dimensions

Size	L (mm)	Size	L (mm)	Size	L (mm)	Size	L (mm)
3/8"x1/4"	31.00	1"x3/4"	40.00	2"x3/4"	61.00	4"x2"	93.00
1/2"x1/4"	31.00	1.1/4"x1/2"	49.00	2"x1"	61.00	4"x2.1/2"	93.00
1/2"x3/8"	31.00	1.1/4"x3/4"	49.00	2"x1.1/4"	61.00	4"x3"	93.00
3/4"x1/4"	38.00	1.1/4"x1"	49.00	2.1/2"x1"	73.00		
3/4"x3/8"	38.00	1.1/2"x1/2"	57.00	2.1/2"x1.1/2"	73.00		
3/4"x1/2"	38.70	1.1/2"x3/4"	57.00	2.1/2"x2"	73.00		
1"x3/8"	40.00	1.1/2"x1"	57.00	3"x1.1/2"	81.00		
1"x1/2"	40.00	2"x1/2"	61.00	3"x2"	81.00		

Suitability

Water, Air, Gas, Oil, Steam



LI-HEX-01

Lintas Hex. Nipple

Features

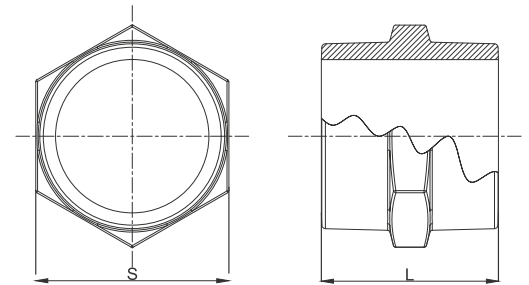
- Available in BSPP / BSPT / NPT Threading as per requirement.
- Pressure Rating PN25, Test Pressure (Hyd.): -30 Kg./cm² (427 psig)
- Working Pressure 25 Kg./cm² (356 psig)

Dimensions

Size	L (mm)	S (mm)
1/4"	34.00	16.80
3/8"	36.00	19.50
1/2"	44.30	23.70
3/4"	48.50	28.70
1"	52.50	35.50
1.1/4"	58.00	46.00
1.1/2"	62.80	51.00
2"	66.50	62.70
2.1/2"	73.00	80.00
3"	86.00	94.00
4"	90.50	120.00

Suitability

Water, Air, Gas, Oil, Steam



LI-RHEX-01

Lintas Reducing Hex Nipple

Features

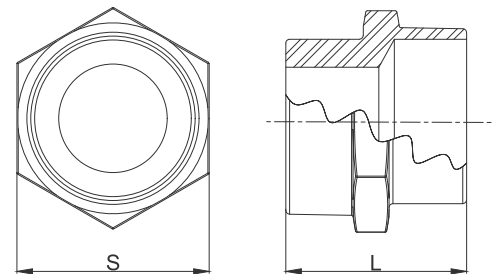
- Available in BSPP / BSPT / NPT Threading as per requirement.
- Pressure Rating PN25, Test Pressure (Hyd.): -30 Kg./cm² (427 psig)
- Working Pressure 25 Kg./cm² (356 psig)

Dimensions

Size	L (mm)	S (mm)	Size	L (mm)	S (mm)
3/8"x1/4"	35.30	19.40	1.1/2"x1"	61.00	50.00
1/2"x1/4"	39.90	23.90	1.1/2"x3/4"	60.30	50.00
3/4"x1/4"	44.00	29.00	2"x1.1/2"	67.70	62.25
3/4"x3/8"	44.00	29.00	2"x1.1/4"	66.77	62.25
3/4"x1/2"	47.50	29.00	2"x1"	66.50	62.25
1"x3/8"	46.50	35.20			
1"x1/2"	50.60	35.20			
1"x3/4"	51.50	35.20			
1.1/4"x1/2"	53.60	35.20			
1.1/4"x3/4"	54.60	45.00			
1.1/4"x1"	55.70	45.00			
1.1/2"x1.1/4"	62.30	50.00			

Suitability

Water, Air, Gas, Oil, Steam



LI-HNIP-01

Lintas Hose Nipple

Features

- Available in BSPP / BSPT / NPT Threading as per requirement.
- Pressure Rating PN25, Test Pressure (Hyd.): -30 Kg./cm² (427 psig)
- Working Pressure 25 Kg./cm² (356 psig)

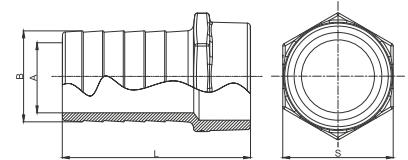
Dimensions

Size	L (mm)	S (mm)	A (mm)	B (mm)
1/4"	48.00	17.20	5.00	8.60
3/8"	54.30	20.10	6.00	10.90
1/2"	56.70	24.20	9.00	14.50
3/4"	67.80	29.00	15.00	20.30
1"	76.50	35.90	18.00	25.50
1.1/4"	98.00	45.80	26.90	34.40

Size	L (mm)	S (mm)	A (mm)	B (mm)
1.1/2"	104.00	52.00	33.20	39.90
2"	114.60	62.30	45.00	52.50
2.1/2"	136.3	80.00	55.00	64
3"	148.00	96.00	68.00	78
4"	157.00	119.9	90.00	103

Suitability

Water, Air, Gas, Oil, Steam



LI-TNIP-01

Lintas Tank Nipple

Features

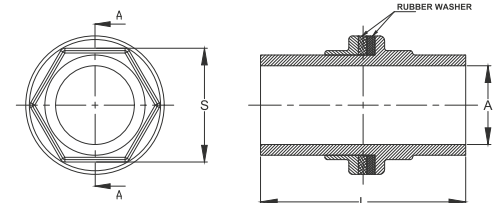
- Precise machining
- Available in BSPP / BSPT / NPT Threading as per requirement
- Working Pressure 25 Kg./cm² (356 psig).

Dimensions

Size	A	L	S
1/2"	14.0	59.5	25.4
3/4"	18.5	65.0	30.3
1"	24.0	69.5	38.3
1.1/4"	33.8	86.0	27.0
1.1/2"	38.5	91.5	52.5
2"	49.0	96.0	65.3

Suitability

Water, Air, Gas, Oil, Steam



LI-UN-01

Lintas Union

Features

- Available in BSP / BSPT / NPT Threading as per requirement.
- Pressure Rating PN25, Test Pressure (Hyd.): -30 Kg./cm² (427 psig)
- Working Pressure 25 Kg./cm² (356 psig)

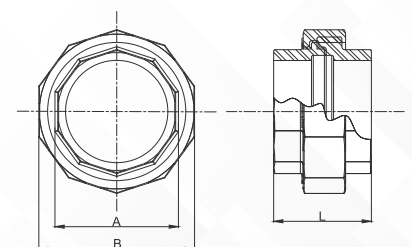
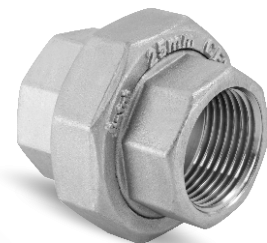
Dimensions

Size	L (mm)	A (mm)	B (mm)
1/8"	-	-	-
1/4"	39.80	18.30	29.00
3/8"	42.50	23.00	36.50
1/2"	43.50	27.30	41.00
3/4"	51.00	32.30	49.40
1"	55.00	40.71	58.20

Size	L (mm)	A (mm)	B (mm)
1.1/4"	57.00	49.50	68.00
1.1/2"	61.00	56.20	76.80
2"	67.00	68.80	91.80
2.1/2"	84.50	86.00	114.00
3"	95.00	100.00	131.00
4"	97.00	128.00	156.00

Suitability

Water, Air, Gas, Oil, Steam



LI-EUN-01

Lintas Elbow Union F/F

Features

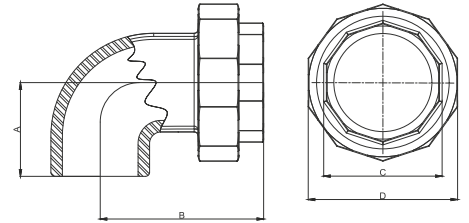
- Available in BSP / BSPT / NPT Threading as per requirement.
- Pressure Rating PN25, Test Pressure (Hyd.): -30 Kg./cm² (427 psig)
- Working Pressure 25 Kg./cm² (356 psig)

Dimensions

Size	A (mm)	B (mm)	C (mm)	D (mm)
1/4"	-	-	-	-
3/8"	22.0	50.90	22.80	36.30
1/2"	27.70	58.70	27.30	41.00
3/4"	31.70	62.70	32.30	49.50
1"	36.40	70.30	40.60	58.00
1.1/4"	43.80	77.00	49.30	68.30

Suitability

Water, Air, Gas, Oil, Steam



LI-RCP-01

Lintas Round Cap

Features

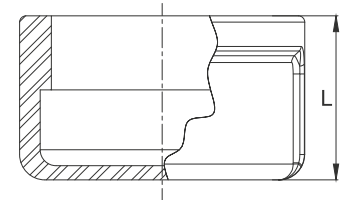
- Available in BSP / BSPT / NPT Threading as per requirement.
- Pressure Rating PN25, Test Pressure (Hyd.): -30 Kg./cm² (427 psig)
- Working Pressure 25 Kg./cm² (356 psig)

Dimensions

Size	L (mm)	Size	L (mm)
-	-	1.1/4"	42.80
1/4"	14.70	1.1/2"	41.60
3/8"	16.60	2"	44.80
1/2"	24.00	2.1/2"	51.80
3/4"	26.50	3"	58.00
1"	33.30	4"	63.50

Suitability

Water, Air, Gas, Oil, Steam



LI-DPG-01

Lintas Dummy/Square Plug

Features

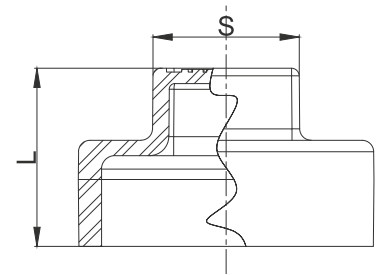
- Precise machining
- Available in BSPP / BSPT / NPT Threading as per requirement.
- Working Pressure 25 Kg./cm² (356 psig).

Dimensions

Size	L (mm)	S (mm)	Size	L (mm)	S (mm)
1/8"	-	-	1.1/4"	38.00	23.50
1/4"	16.00	8.50	1.1/2"	40.50	27.50
3/8"	22.40	12.40	2"	45.10	32.75
1/2"	27.00	13.20	2.1/2"	44.5	38.00
3/4"	33.43	48.76	3"	49.5	43.00
1"	33.00	17.20	4"	57.5	56.00

Suitability

Water, Air, Gas, Oil, Steam



LI-RBSH-01 Lintas Reducing Bush

Features

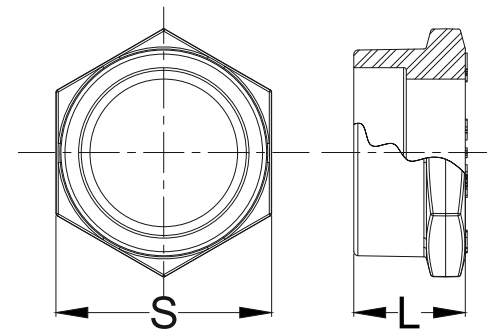
- Available in BSPP / BSPT / NPT Threading as per requirement.
- Working Pressure 25 Kg./cm2 (356 psig).

Dimensions

Size (mm)	L (mm)	S (mm)	Size (mm)	L (mm)	S (mm)
10x8	25.0	31.0	40x32	51.5	36.0
15x8	26.5	24.0	50x15	62.0	41.5
15x10	26.5	24.0	50x20	62.0	41.5
20x8	31.0	26.0	50x25	62.0	41.5
20x10	31.0	26.0	50x32	62.0	41.5
20x15	31.0	26.0	50x40	62.0	41.5
25x10	38.5	28.0	65x32	42.0	80.0
25x15	38.5	28.0	65x40	42.0	80.0
25x20	38.5	28.0	65x50	42.0	80.0
32x15	46.5	34.0	80x40	46.0	95.0
32x20	46.5	34.0	80x50	46.0	95.0
32x25	46.5	34.0	80x65	46.0	95.0
40x15	51.5	36.0	100x50	54.0	120.0
40x20	51.5	36.0	100x65	54.0	120.0
40x25	51.5	36.0	100x80	54.0	120.0

Suitability

Water, Air, Gas, Oil, Steam



LI-HNUT-01 Lintas Hex Nut

Features

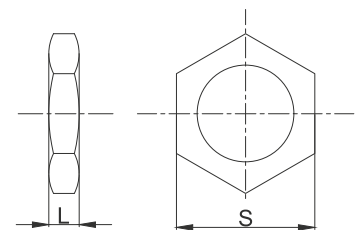
- Available in BSP / BSPT / NPT Threading as per requirement.

Dimensions

Size	L (mm)	S (mm)
3/8"	9.30	26.20
1/2"	9.70	30.90
3/4"	10.30	36.70
1"	11.10	42.90
1.1/4"	12.60	54.20
1.1/2"	13.00	61.50
2"	13.30	74.40

Suitability

Water, Air, Gas, Oil, Steam



- Important: Due to continuous development programme design & data in the catalogue are subject to change without any notice.



LAXMI INDUSTRIES

 D-117, Focal Point Extension, Jalandhar 144 012 (Pb.) INDIA
 0181 2602657, 2601607  www.lintasgroup.com
 Email : info@lintasgroup.com